

Glycol Feed Unit

Glycol feed units are designed to provide an automated supply of water-glycol mix to a cooling or heating closed loop system. Units are factory engineered, assembled and tested with easy plug and run capability. Units are compact, self-contained with a small footprint for ease of installation and operation.



STANDARD FEATURES:

- **UL / CUL 508A Control Panel**
Factory wired including type 4x enclosure. Audible alarm for low level. Selector switches with pilot lights for power, pump and alarm. 9' incoming power cord with plug.
- **Pressure Pump**
1/3HP 2 GPM @ 100PSI with built-in inlet strainer.
- **Low Level Cut-out Float Switch**
System shut-down to prevent pump from running dry with visual and audible alarm including dry contacts for remote alarm.
- **55 Gallon Tank**
Tank is heavy duty polyethylene with graduated capacity scale, hinged cover and is supported on a powder coated structural steel support stand.
- **Discharge and Suction Piping**
Includes high pressure relief valve, pressure switch, check valve, pressure gauge and suction isolation valve.

SPECIFICATIONS:

<u>MODEL</u>	<u>SIZE</u>	<u>HP</u>	<u>VOLTAGE</u>	<u>PRESSURE</u>
S-55-100-2-PEFS	Simplex	(1) 1/3hp	110v / 1PH / 60hz	Cut in 10-45 PSI / 10-30 PSI Differential

Model Number

S-55-100-2-PEFS

SYSTEM

PEFS - Polyethylene Feed System

PUMP

2 - 1/3 hp pump, 2 GPM

PRESSURE RANGE

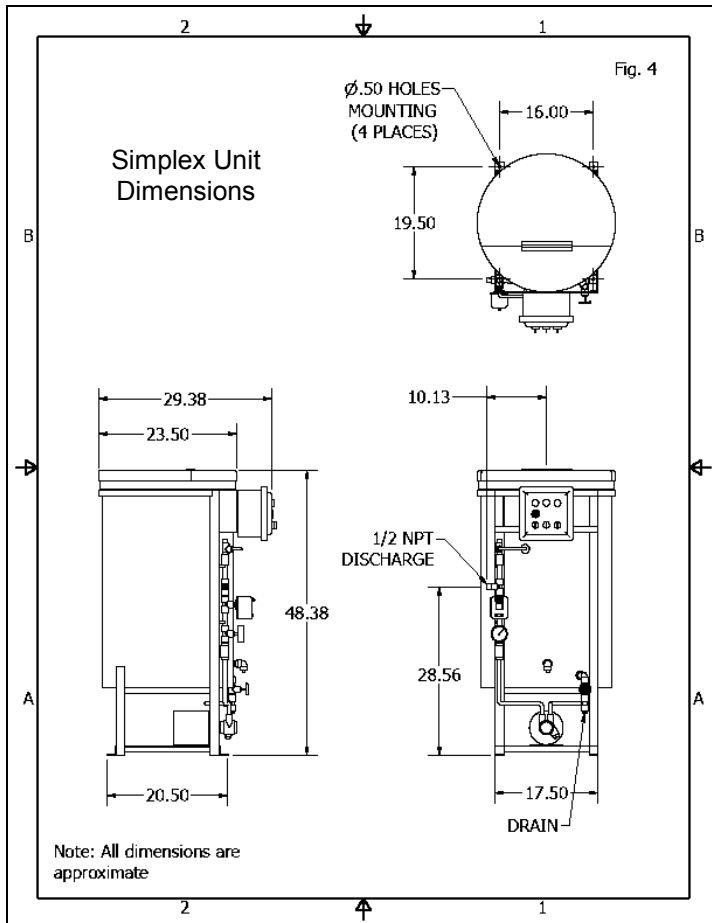
100 - 100 PSIG

TANK SIZE

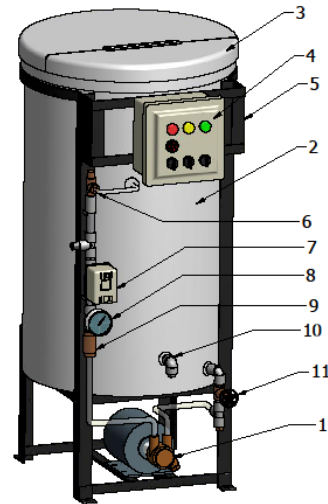
55 - 55 Gallon Polyethylene Tank

UNIT STYLE

S - Simplex Pump Station



- Fig. 5
- | | |
|--------------------------------|-----------------------------|
| 1 PUMP MOTOR ASSEMBLY | 7 PRESSURE SWITCH |
| 2 TANK POLYETHYLENE 55 GALLONS | 8 PRESSURE GAUGE |
| 3 COVER POLYETHYLENE HINGED | 9 CHECK VALVE |
| 4 ELECTRICAL PANEL UL/CUL 508A | 10 FLOAT SWITCH (LOW LEVEL) |
| 5 BASE ASSEMBLY | 11 SUCTION ISOLATION VALVE |
| 6 PRESSURE RELIEF VALVE | |



The specifications contained in this bulletin were effective at the time of publishing. We reserve the right to discontinue products at any time or to change specifications or design without incurring any obligation.

Skidmore

1875 Dewey Ave.
Benton Harbor MI 49022

TEL - (269) 925-8812
FAX - (269) 925-7888

Duplex Glycol Feed Unit

Duplex glycol feed units are designed to provide an automated supply of water-glycol mix to two separate cooling or heating closed loop systems. Units are factory engineered, assembled and tested with easy plug and run capability. Units are compact and self-contained with a small footprint for ease of installation and operation.



STANDARD FEATURES:

- **UL / CUL 508A Control Panel**
Factory wired including type 4x enclosure. Audible alarm for low level. Selector switches with pilot lights for power, pump and alarm. 9' incoming power cord with plug.
- **Pressure Pumps**
1/3HP 2 GPM @ 100PSI with built-in inlet strainer.
- **Low Level Cut-out Float Switch**
System shut-down to prevent pumps from running dry with visual and audible alarm including dry contacts for remote alarm.
- **55 Gallon Tank**
Tank is heavy duty polyethylene with graduated capacity scale, hinged cover and is supported on a powder coated structural steel support stand.
- **Discharge and Suction Piping**
Includes high pressure relief valves, pressure switches, check valves, pressure gauges and suction isolation valves.

SPECIFICATIONS:

<u>MODEL</u>	<u>SIZE</u>	<u>HP</u>	<u>VOLTAGE</u>	<u>PRESSURE</u>
D-55-100-2-PEFS	Duplex	(2) 1/3hp	110v / 1PH / 60hz	Cut in 10-45 PSI / 10-30 PSI Differential

Model Number

D-55-100-2-PEFS

SYSTEM

PEFS - Polyethylene Feed System

PUMP

2 - 1/3 hp pump, 2 GPM

PRESSURE RANGE

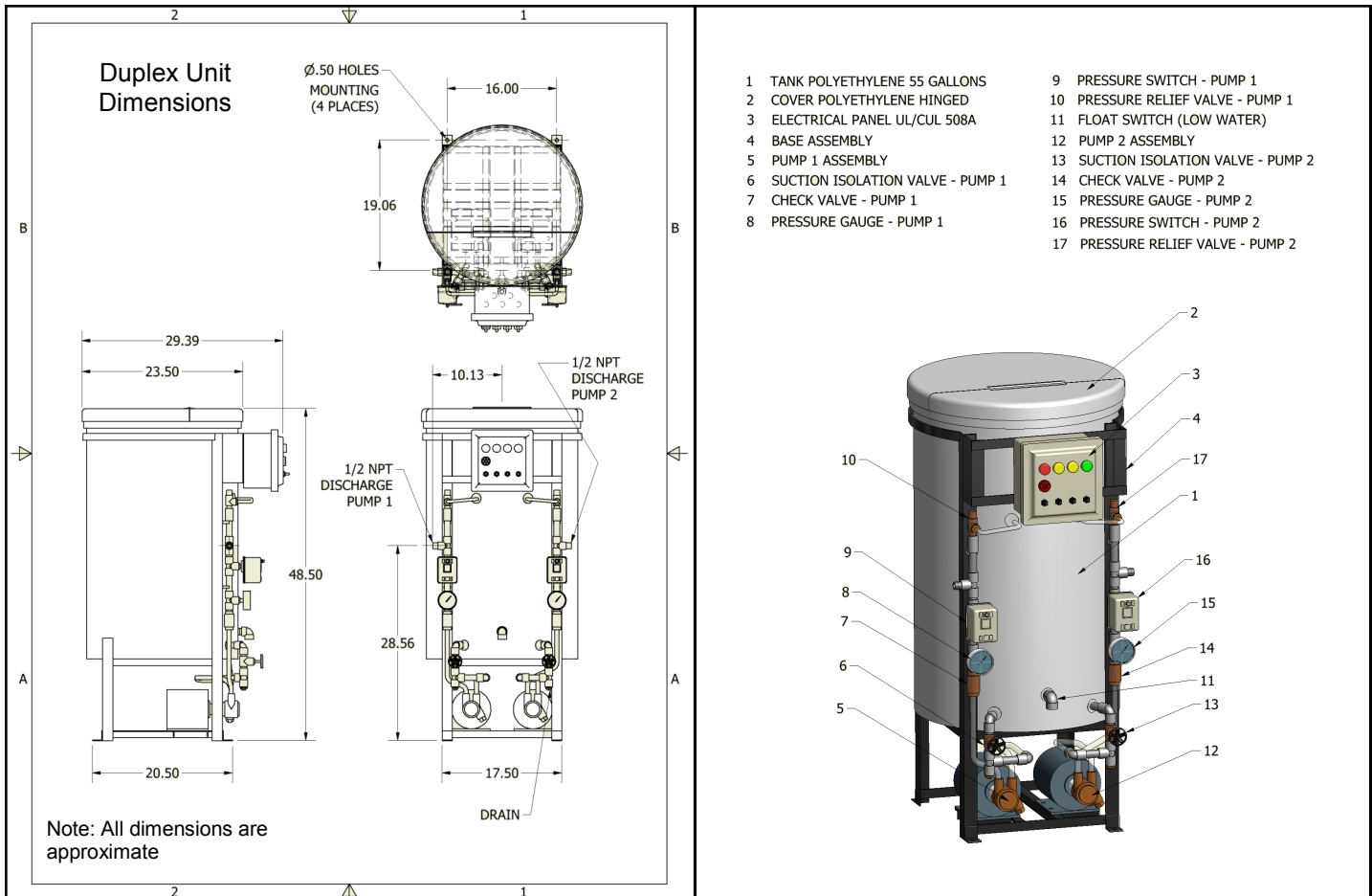
100 - 100 PSIG

TANK SIZE

55 - 55 Gallon Polyethylene Tank

UNIT STYLE

D - Duplex Pump Station



The specifications contained in this bulletin were effective at the time of publishing. We reserve the right to discontinue products at any time or to change specifications or design without incurring any obligation.

Skidmore

1875 Dewey Ave.
Benton Harbor MI 49022

TEL - (269) 925-8812

FAX - (269) 925-7888

Simplex 100 Gallon Glycol Feed Unit

Glycol feed units are designed to provide an automated supply of water-glycol mix to a cooling or heating closed loop system. Units are factory engineered, assembled and tested with easy plug and run capability. Units are compact, self-contained with a small footprint for ease of installation and operation.



STANDARD FEATURES:

- **UL / CUL 508A Control Panel**
Factory wired including type 4x enclosure. Audible alarm for low level. Selector switches with pilot lights for power, pump and alarm. 9' incoming power cord with plug.
- **Pressure Pump**
1/3HP 2 GPM @ 100PSI with built-in inlet strainer.
- **Low Level Cut-out Float Switch**
System shut-down to prevent pump from running dry with visual and audible alarm including dry contacts for remote alarm.
- **100 Gallon Tank**
Tank is heavy duty polyethylene with graduated capacity scale, removable cover and is supported on a powder coated structural steel support stand.
- **Discharge and Suction Piping**
Includes high pressure relief valve, pressure switch, check valve, pressure gauge and suction isolation valve.

SPECIFICATIONS:

<u>MODEL</u>	<u>SIZE</u>	<u>HP</u>	<u>VOLTAGE</u>	<u>PRESSURE</u>
S-100-100-2-PEFS	Simplex	(1) 1/3hp	110v / 1PH / 60hz	Cut in 10-45 PSI / 10-30 PSI Differential

Model Number

S-100-100-2-PEFS

SYSTEM

PEFS - Polyethylene Feed System

PUMP

2 - 1/3 hp pump, 2 GPM

PRESSURE RANGE

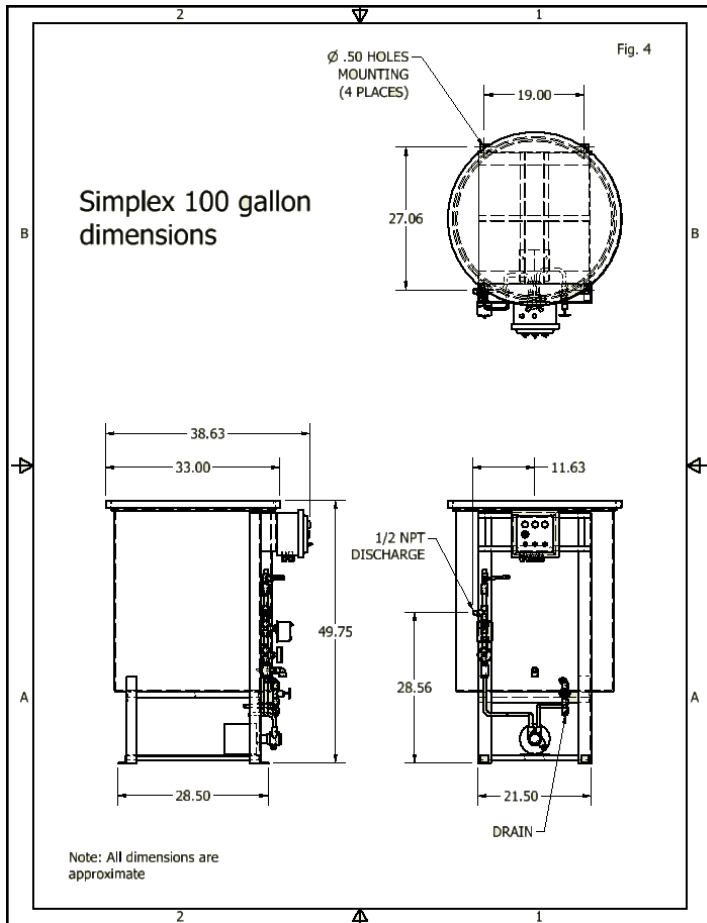
100 - 100 PSIG

TANK SIZE

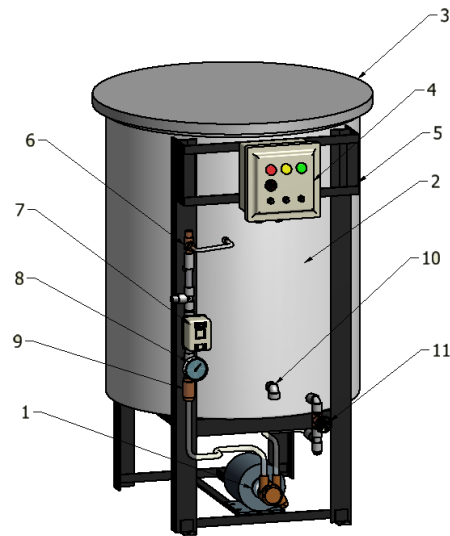
100 - 100Gallon Polyethylene Tank

UNIT STYLE

S - Simplex Pump Station



- Fig. 5
- | | | |
|-------------------------------|----|--------------------------|
| PUMP MOTOR ASSEMBLY | 7 | PRESSURE SWITCH |
| TANK POLYETHYLENE 100 GALLONS | 8 | PRESSURE GAUGE |
| COVER POLYETHYLENE | 9 | CHECK VALVE |
| ELECTRICAL PANEL UL/CUL 508A | 10 | FLOAT SWITCH (LOW LEVEL) |
| BASE ASSEMBLY | 11 | SUCTION ISOLATION VALVE |
| PRESSURE RELIEF VALVE | | |



The specifications contained in this bulletin were effective at the time of publishing. We reserve the right to discontinue products at any time or to change specifications or design without incurring any obligation.

Skidmore

1875 Dewey Ave.
Benton Harbor MI 49022

TEL - (269) 925-8812
FAX - (269) 925-7888

Duplex 100 Gallon Glycol Feed Unit

Duplex glycol feed units are designed to provide an automated supply of water-glycol mix to two separate cooling or heating closed loop systems. Units are factory engineered, assembled and tested with easy plug and run capability. Units are compact and self-contained with a small footprint for ease of installation and operation.



STANDARD FEATURES:

- **UL / CUL 508A Control Panel**
Factory wired including type 4x enclosure. Audible alarm for low level. Selector switches with pilot lights for power, pump and alarm.
- **Pressure Pumps**
1/3HP 2 GPM @ 100PSI with built-in inlet strainer.
- **Low Level Cut-out Float Switch**
System shut-down to prevent pumps from running dry with visual and audible alarm including dry contacts for remote alarm.
- **100 Gallon Tank**
Tank is heavy duty polyethylene with a graduated capacity scale and is supported on a powder coated structural steel support stand.
- **Discharge and Suction Piping**
Includes high pressure relief valves, pressure switches, check valves, pressure gauges and suction isolation valves.

SPECIFICATIONS:

<u>MODEL</u>	<u>SIZE</u>	<u>HP</u>	<u>VOLTAGE</u>	<u>PRESSURE</u>
D-100-100-2-PEFS	Duplex	(2) 1/3hp	110v / 1PH / 60hz	Cut in 10-45 PSI / 10-30 PSI Differential

Model Number

D-100-100-2-PEFS

SYSTEM

PEFS - Polyethylene Feed System

PUMP

2 - 1/3 hp pump, 2 GPM

PRESSURE RANGE

100 - 100 PSIG

TANK SIZE

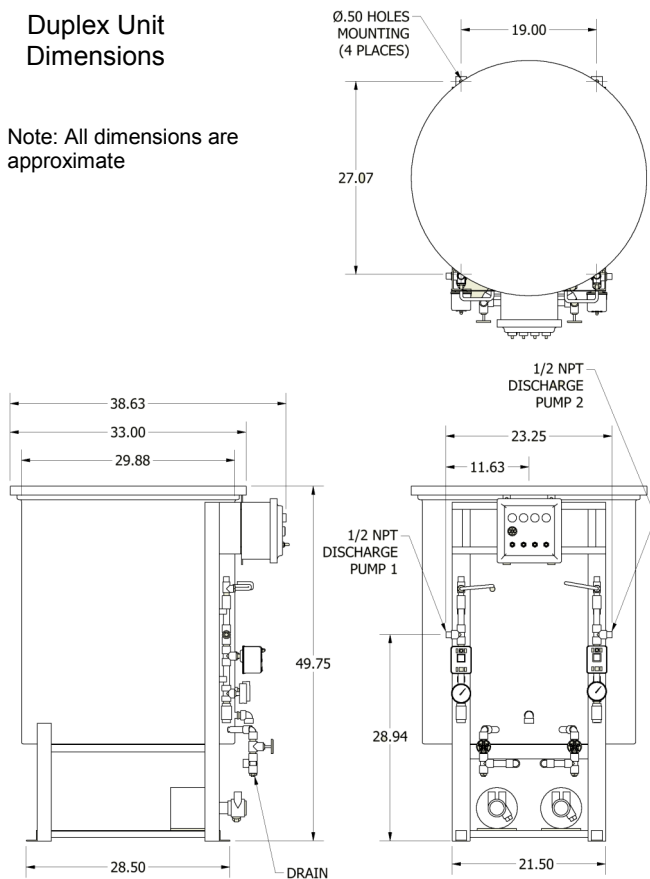
100 - 100 Gallon Polyethylene

UNIT STYLE

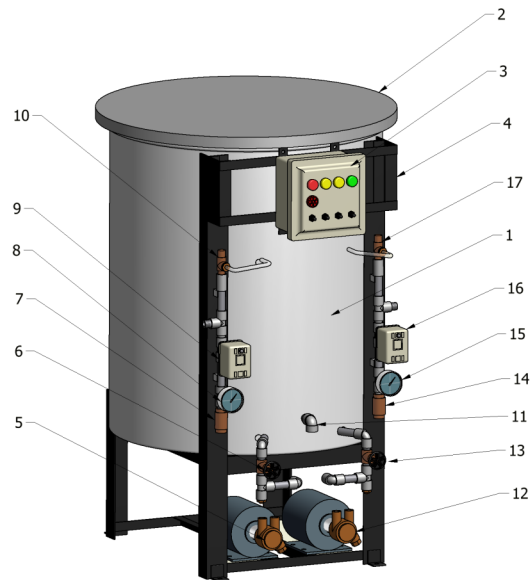
D - Duplex Pump Station

Duplex Unit Dimensions

Note: All dimensions are approximate



- | | |
|------------------------------------|-------------------------------------|
| 1 TANK POLYETHYLENE 100 GALLONS | 9 PRESSURE SWITCH - PUMP 1 |
| 2 COVER POLYETHYLENE HINGED | 10 PRESSURE RELIEF VALVE - PUMP 1 |
| 3 ELECTRICAL PANEL UL/CUL 508A | 11 FLOAT SWITCH (LOW LEVEL) |
| 4 BASE ASSEMBLY | 12 PUMP 2 ASSEMBLY |
| 5 PUMP 1 ASSEMBLY | 13 SUCTION ISOLATION VALVE - PUMP 2 |
| 6 SUCTION ISOLATION VALVE - PUMP 1 | 14 CHECK VALVE - PUMP 2 |
| 7 CHECK VALVE - PUMP 1 | 15 PRESSURE GAUGE - PUMP 2 |
| 8 PRESSURE GAUGE - PUMP 1 | 16 PRESSURE SWITCH - PUMP 2 |
| | 17 PRESSURE RELIEF VALVE - PUMP 2 |



The specifications contained in this bulletin were effective at the time of publishing. We reserve the right to discontinue products at any time or to change specifications or design without incurring any obligation.

Skidmore

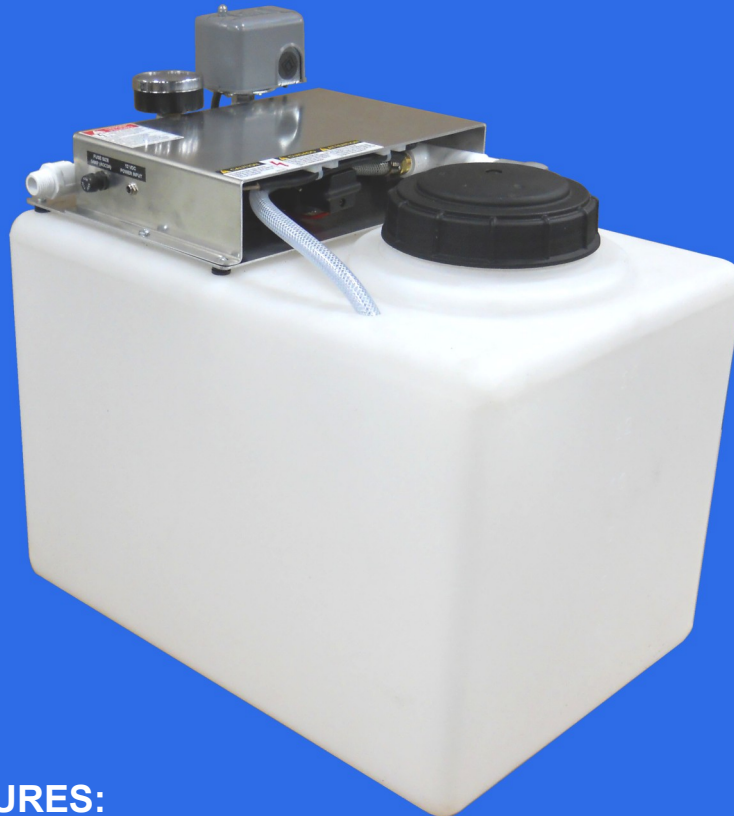
1875 Dewey Ave.
Benton Harbor MI 49022

TEL - (269) 925-8812

FAX - (269) 925-7888

16 Gallon Compact Glycol Feed Unit

Glycol feed units are designed to provide an automated supply of water-glycol mix to a cooling or heating closed loop system. Units are factory engineered, assembled and tested with easy plug and run capability. Units are compact, self-contained with a small footprint for ease of installation and operation.



STANDARD FEATURES:

- **Low Voltage Operation**

Unit includes a UL listed 115vac to 12vdc power supply with easy access system fuse and power indication light.

- **Pressure Pump**

Self priming diaphragm pump 12vdc .

- **Low Level Cut-out Float Switch**

System shut-down to prevent pump from running dry.

- **16 Gallon Tank**

Tank is heavy duty polyethylene with graduated capacity scale and screw on fill cap.

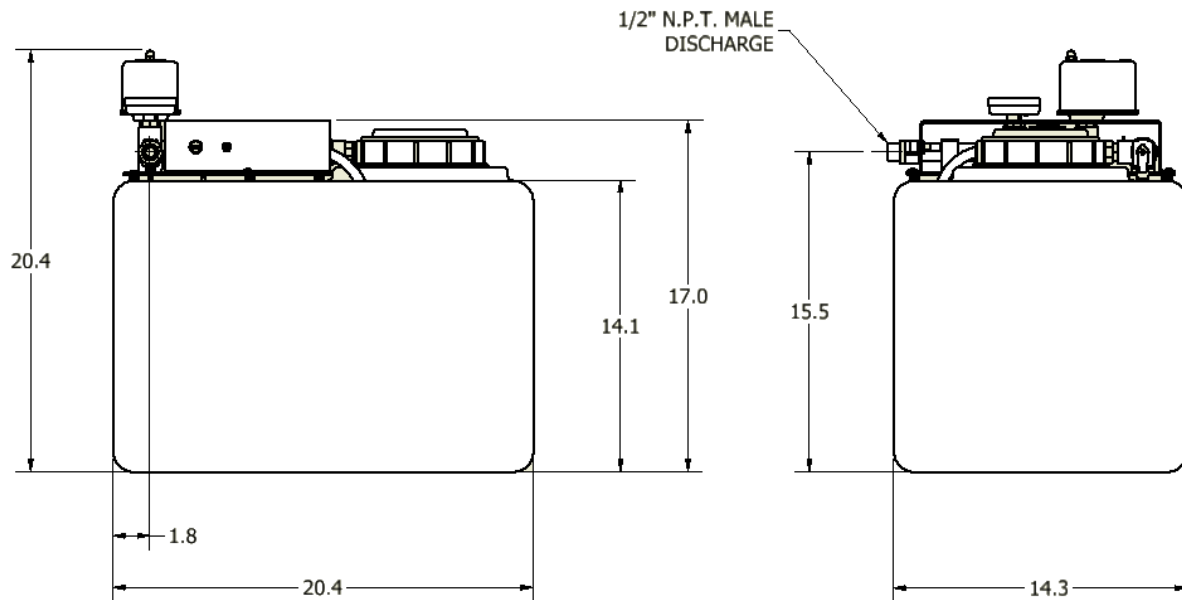
- **Discharge and Suction Piping**

Includes suction strainer, industrial style pressure switch, brass check valve, pressure gauge and mixing purge valve.

SPECIFICATIONS:

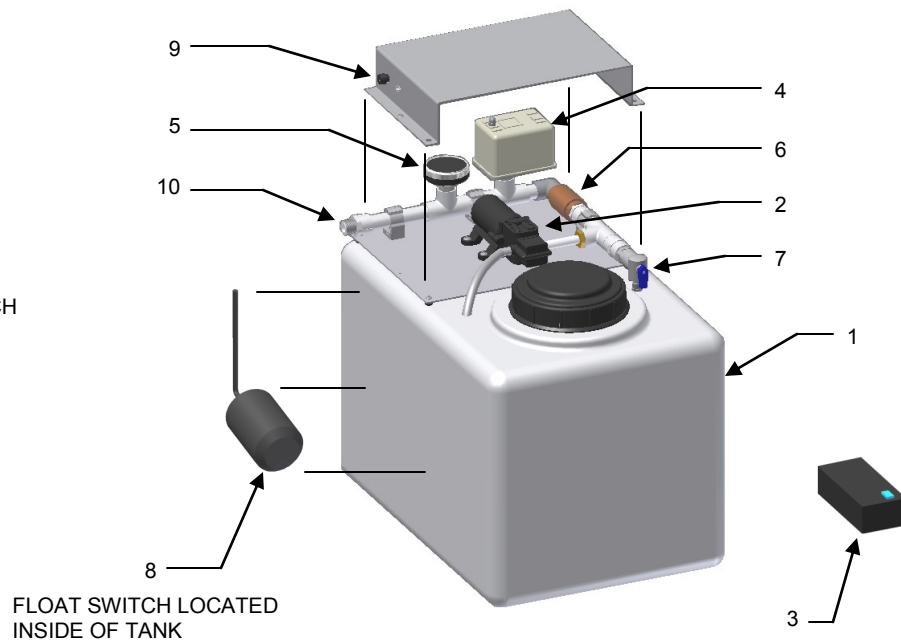
<u>MODEL</u>	<u>SIZE</u>	<u>VOLTAGE</u>	<u>PRESSURE</u>
CG-16-22	Simplex	115vac / 1PH / 60hz	Cut in 12PSI / Cut out 22PSI

16 GALLON DIMENSIONAL DRAWING



UNIT COMPONENTS:

- 1 - 16 GALLON TANK
- 2 - PUMP
- 3 - POWER SUPPLY
- 4 - PRESSURE SWITCH
- 5 - PRESSURE GAUGE
- 6 - CHECK VALVE
- 7 - PURGE & MIX VALVE
- 8 - LOW LEVEL FLOAT SWITCH
- 9 - UNIT FUSE
- 10 - 1/2" NPT DISCHARGE



The specifications contained in this bulletin were effective at the time of publishing. We reserve the right to discontinue products at any time or to change specifications or design without incurring any obligation.

Skidmore

1875 Dewey Ave.
Benton Harbor MI 49022

TEL - (269) 925-8812
FAX - (269) 925-7888

Side Stream Tanks and Accessories

Skidmore side stream tanks are designed to introduce water treatment chemicals into a heating or cooling closed loop system.



STANDARD TANK FEATURES:

- High Strength Steel
- Dome Top and Bottom
- 125 PSI at 200 Deg. F. Rating
- 2" Cam Lock Quick Connect and Cap
- Powder Coat Paint
- Small Tank Footprint

Standard Tanks :

SSF-5 5 gal. side stream feeder tank 10 " dia. X 34" high with 2 " cam lock quick connect and cap

SSF-12 12 gal. side stream feeder tank 10 " dia. X 54.5 " high with 2 " cam lock quick connect and cap

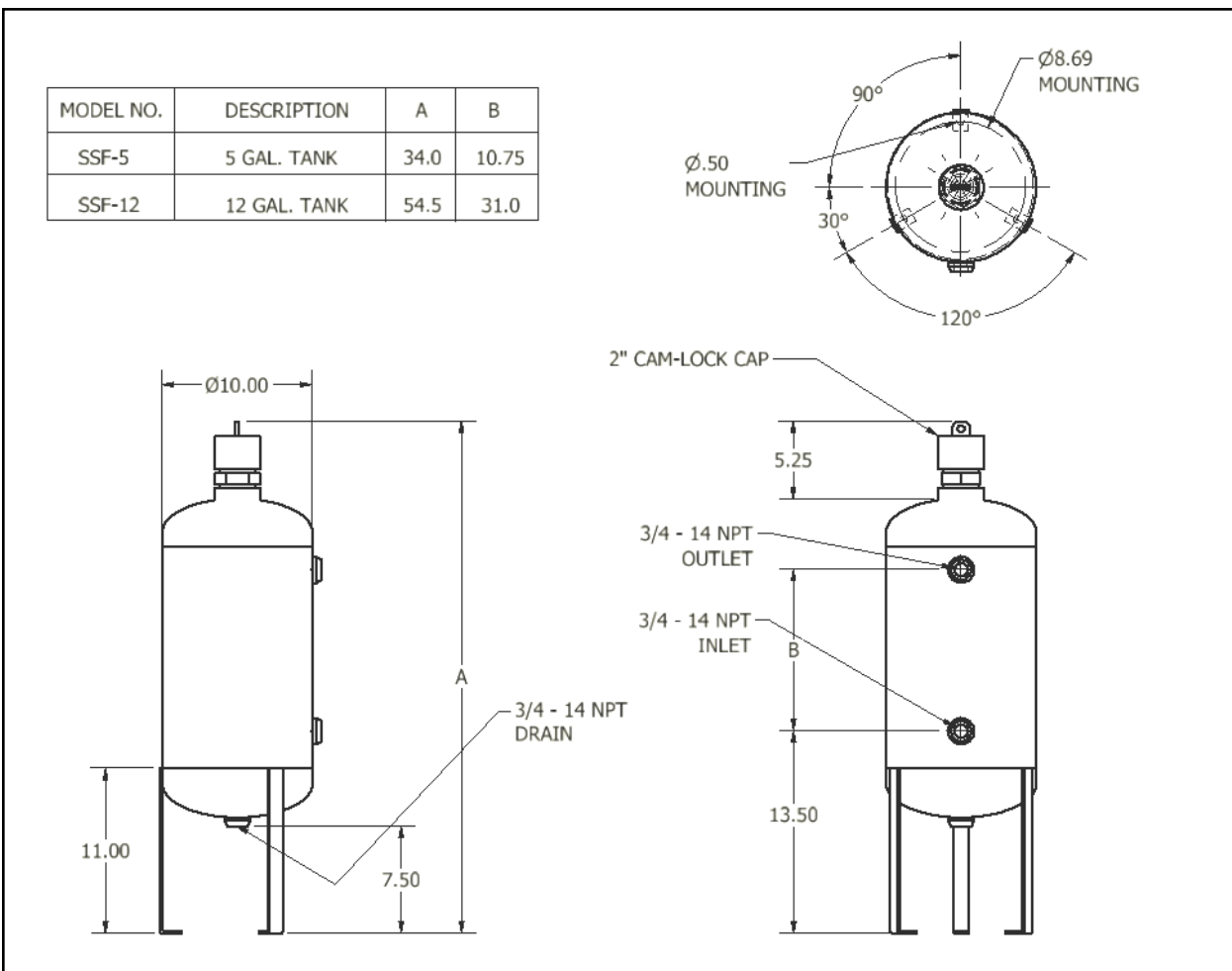
Tank Accessories:

PE-FUN Funnel assembly: 2 " cam lock quick connect x 11 " dia. polypropylene inlet

VP-0.75-2 Valve package kit: Inlet – 3/4 " valve and union

Outlet- 3/4 " valve and union

Drain- 3/4 " valve and elbow



The specifications contained in this bulletin were effective at the time of publishing. We reserve the right to discontinue products at any time or to change specifications or design without incurring any obligation.

Skidmore

1875 Dewey Ave.
Benton Harbor MI 49022

TEL - (269) 925-8812
FAX - (269) 925-7888